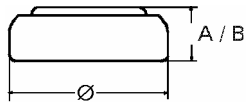


### Data Sheet

**Type Number** ..... 20377  
**Designation IEC** ..... SR66  
**System** ..... Silver oxide / Zinc /  
 NaOH - Electrolyte



**Nominal Voltage** ..... 1,55 V  
**Typical Capacity C** ..... 24 mAh  
 Load 20 kOhm, at 20 °C down to 1.2 V

**Weight (approx.)** ..... 0,39 g  
**Volume** ..... 0,09 ccm  
**Coding**..... Date of Manufacturing  
 Month/Year

<b>Temperature Ranges</b>	min	max.
Storage .....	-10 °C	65 °C
Discharge .....	-10 °C	65 °C

<b>Dimensions</b>	min	max.
Diameter (Ø).....	6,7	6,8
Height (A/B) .....	2,4	2,6

**Segment** ..... Watch

**Main Applications** ..... Watch  
 Electronic

### Typical Capacities (at 20 °C)

Discharge Type	Load	End Voltage:	1.2 V
Continuous 24h/d,7d/w Current [µA]:	20000 Ω  78	Time:	306 h
		Capacity [mAh]:	24
		Energy [mWh]:	37